

**CITY OF VINELAND – DIVISION OF ENGINEERING
E. LANDIS AVENUE AND N./S. VALLEY AVENUE
TRAFFIC SIGNAL UPGRADES
CITY OF VINELAND
CUMBERLAND COUNTY, NEW JERSEY**

**David J. Maillet, PE | City Engineer
Stephanie Wakeley, EIT | Assistant Engineer - Traffic
Beth-Ann Grasso, PE, CME, CFM | Project Manager
John McAvey, EIT, RSP1 | Assistant Project Manager**



Public Information Center Meeting | April 2, 2025 @ 4:00 PM

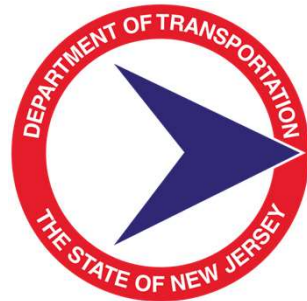


PARTNERS FOR WHAT'S POSSIBLE

Introduction



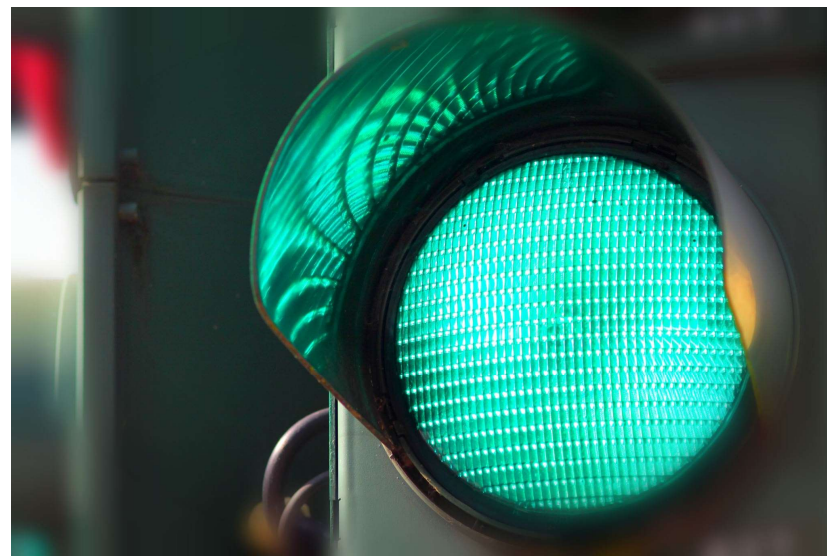
- ▶ The project is federally funded.
- ▶ Pennoni Associates, Inc. is the lead traffic engineering consultant.
- ▶ The following process is typically applied for transportation improvement projects:
 - ▶ Evaluate
 - ▶ Plan
 - ▶ Design
 - ▶ Construct



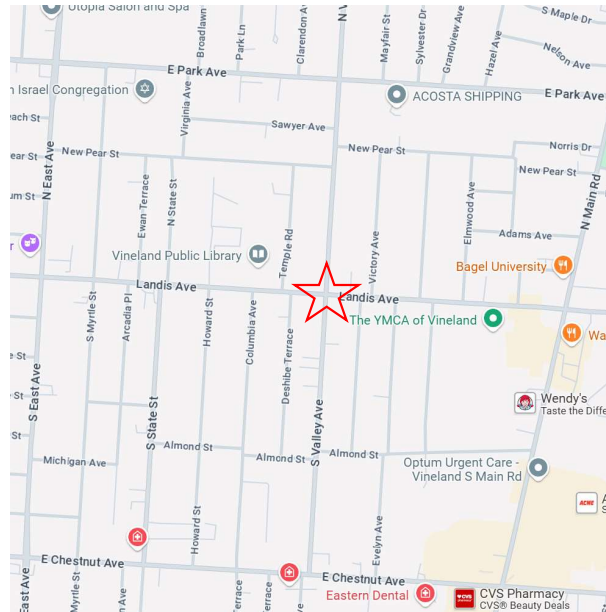
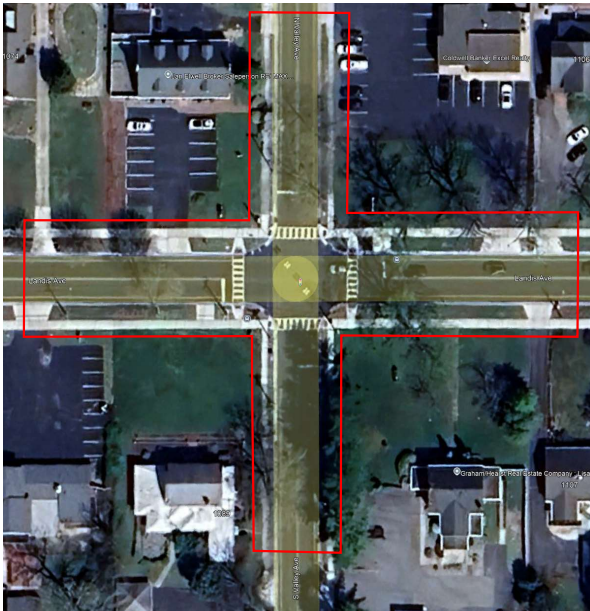
Discussion Agenda



- ▶ Project Location
- ▶ Existing Conditions
- ▶ Purpose and Need
- ▶ Proposed Improvements
- ▶ Next Steps
- ▶ Q & A



Project Location



- ▶ E. Landis Avenue and N./S. Valley Avenue
- ▶ Striping replacement will extend approximately 100 LF up each approach.



Existing Conditions



- ▶ Traffic signal heads are suspended from span-wire.
- ▶ There are no traffic signal-specific pedestrian accommodations.
- ▶ Curb ramps have settled and are no longer ADA compliant.
- ▶ Traffic signal timing is outdated for the current traffic volumes.



Purpose and Need



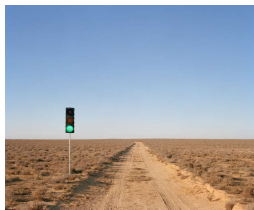
- ▶ A span-wire traffic signal is not current NJDOT standard.
- ▶ Under existing conditions, there are no pedestrian signal accommodations such as:
 - ▶ Push buttons
 - ▶ Pedestrian countdown heads (a.k.a. hand/mans)
- ▶ The existing traffic signal head layout does not meet currently accepted design guidelines.



Proposed Improvements



- ▶ Update traffic signal to include black powder-coated equipment, including poles and mast arms.
- ▶ Revise traffic signal timing directive with updated vehicular and pedestrian clearance calculations.
- ▶ Reconstruct two ADA curb ramps.
- ▶ Restripe the intersection and 100 LF up each approach.
- ▶ Restrict right-turns on red (RTOR) on both approaches of Valley Avenue.
- ▶ Pedestrian push buttons and countdown heads.




Next Steps



- ▶ Proceed with final design plans.
- ▶ Develop construction cost estimates.
- ▶ Bid project to prospective contractors.
- ▶ Enter construction with an anticipated completion in Fall 2026.





This meeting has been recorded and will be available for replay at the City of Vineland website (<https://www.vinelandcity.org/>)

Public comment will be accepted for a period of 30 days through May 2, 2025

Please kindly forward all comments to:

Stephanie Wakeley | swakeley@vinelandcity.org | (856) 794-4000 ext. 4091

THANK YOU

Questions?



PARTNERS FOR WHAT'S POSSIBLE