

# PUBLIC INFORMATION CENTER

## East Avenue Pedestrian Safety Improvements

Monday, December 8, 2025



East Avenue Pedestrian Safety Improvements



# AGENDA

---

- **Project Background**
- **Project Location**
- **Existing Conditions**
- **Proposed Improvements**
- **Next Steps/Questions**

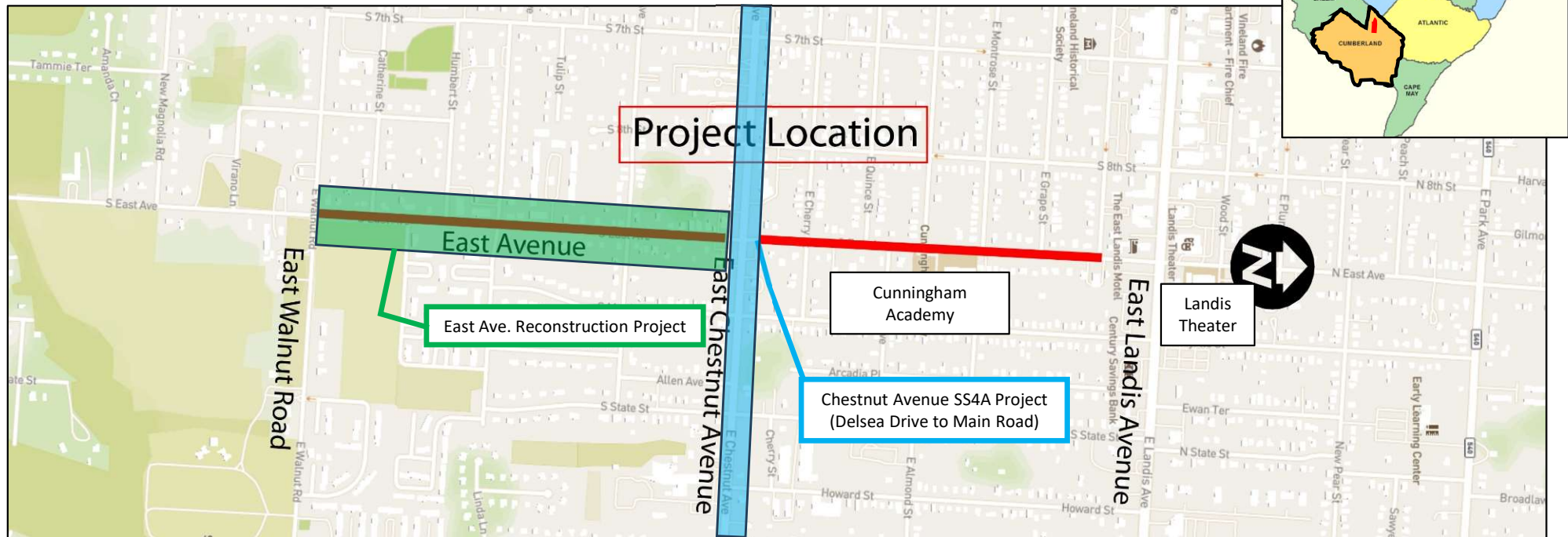


# PROJECT LOCATION

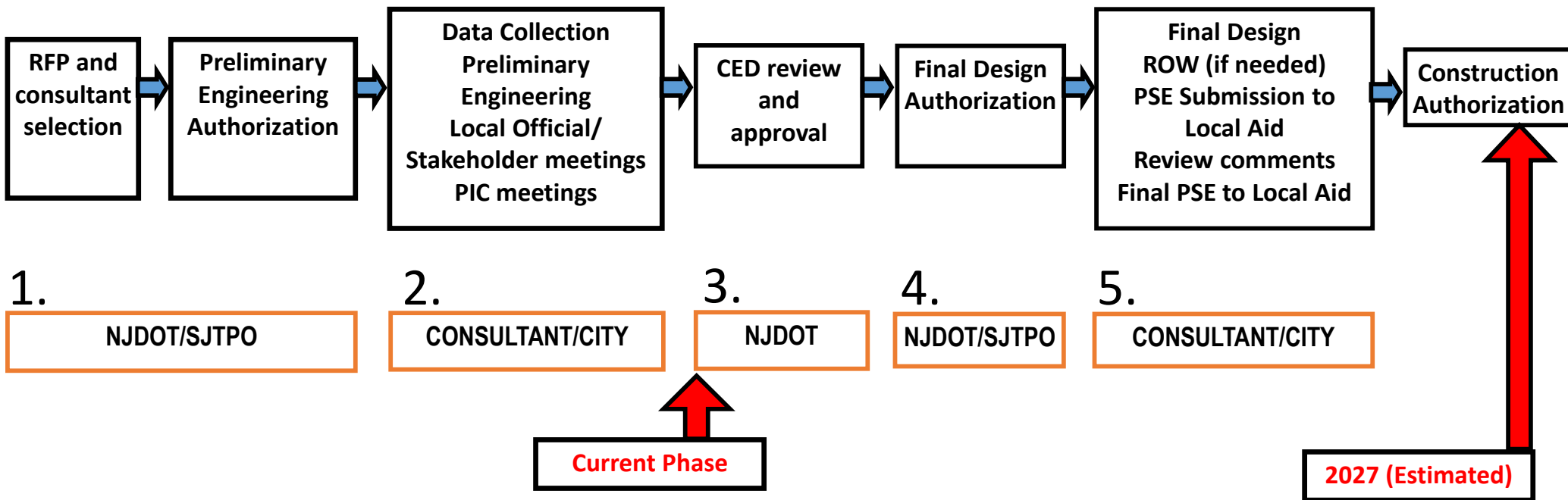
## Cumberland County

City of Vineland

East Avenue MP 0.76 – MP 1.69

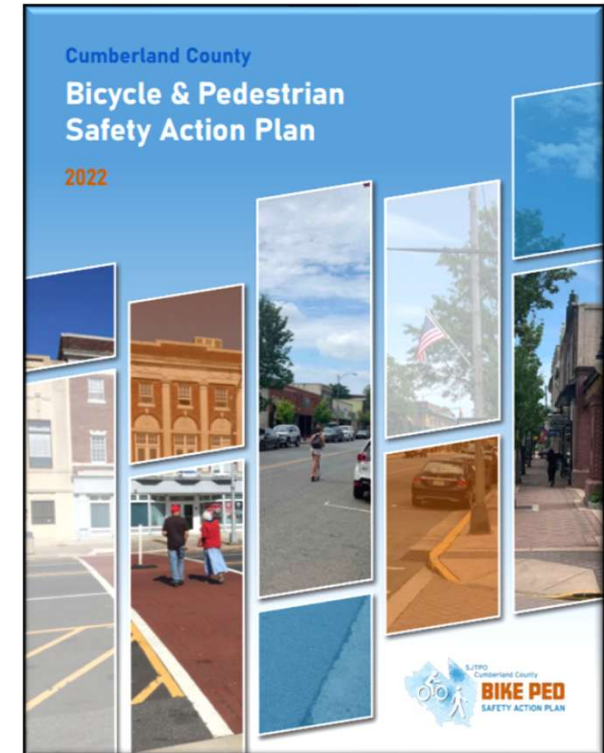


# FEDERAL PROCESS AND PROJECT TIMELINE



# PROJECT BACKGROUND

- **2022** – Cumberland County adopted the *Cumberland County Bicycle and Pedestrian Safety Action Plan*
  - This included Safety Analysis, Project Selection, and Concept Development
- **2023** – Federal Funding Secured to advance the projects
- **2024** – Preliminary Engineering (PE) Phase began
  - Survey was completed and the Team led Field Walks with local stakeholders
- **PRESENT** – The Project Team is advancing the concepts to 60% plans and seeking feedback



# PROJECT BACKGROUND

---

## Purpose

The primary objective of this project is to provide safety improvements through the design and implementation of multi-modal and traffic calming solutions.

## Need

Between 2018-2022, 90 crashes occurred within the project limits. Safety improvements are necessary to achieve the Target Zero Commission goal of eliminating traffic deaths and serious injuries in New Jersey by 2040.

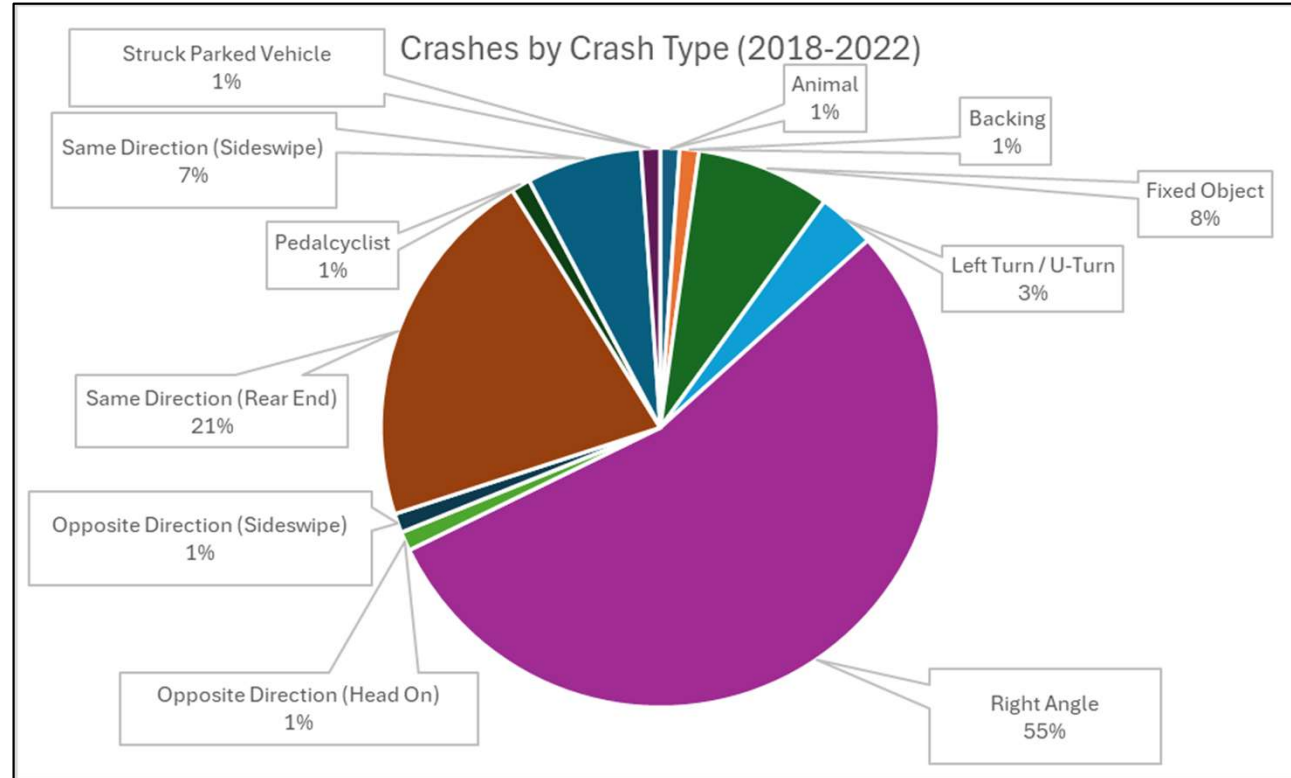
# EXISTING CONDITIONS

---

- 2018-2022 crash data
  - 90 crashes for entire corridor (0.93 miles)
- Crash Severities
  - 0 Fatal Crashes
  - 3 Suspected Serious Injury Crashes
  - 13 Suspected Minor Injury Crashes
  - 30 Possible Injury Crashes
  - 44 No Apparent Injury Crashes

# EXISTING CONDITIONS

- Predominant Crash Types
  - 49 (55%) Right Angle Crashes
  - 19 (21%) Rear End Crashes





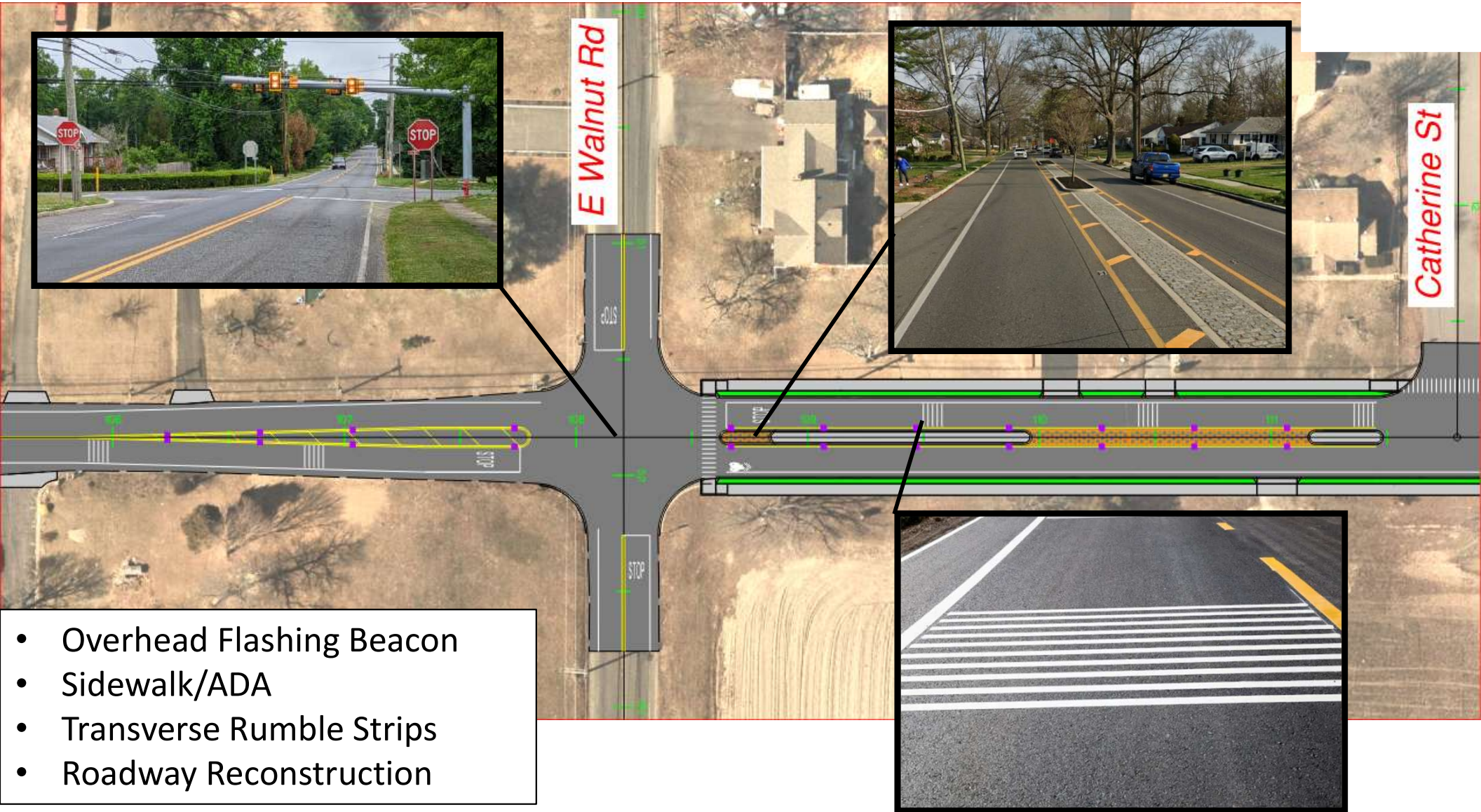
# PROPOSED IMPROVEMENTS

---

- Repaving/Reconstruction
- Traffic Calming
- ADA/Curb Ramp Improvements
- Sidewalk Connectivity/Reconstruction
- Drainage Improvements
- Signage/Striping
- Drop-Off Area at Cunningham Academy
- Lighting Improvements
- Utility Pole Relocations

# PROPOSED IMPROVEMENTS

S. East Ave at E Walnut Rd



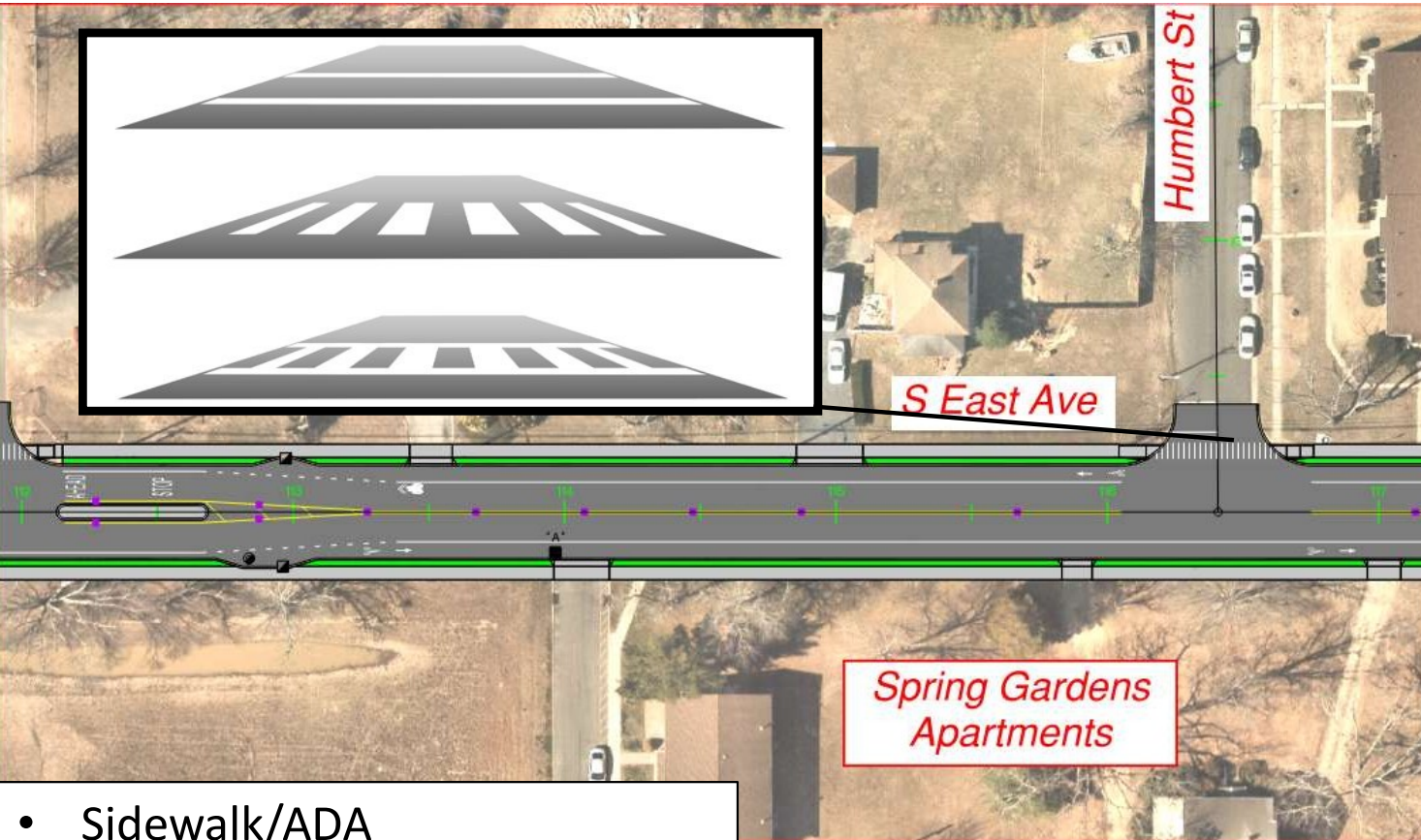
East Avenue Pedestrian Safety Improvements





# PROPOSED IMPROVEMENTS

S. East Ave North of E Walnut Rd



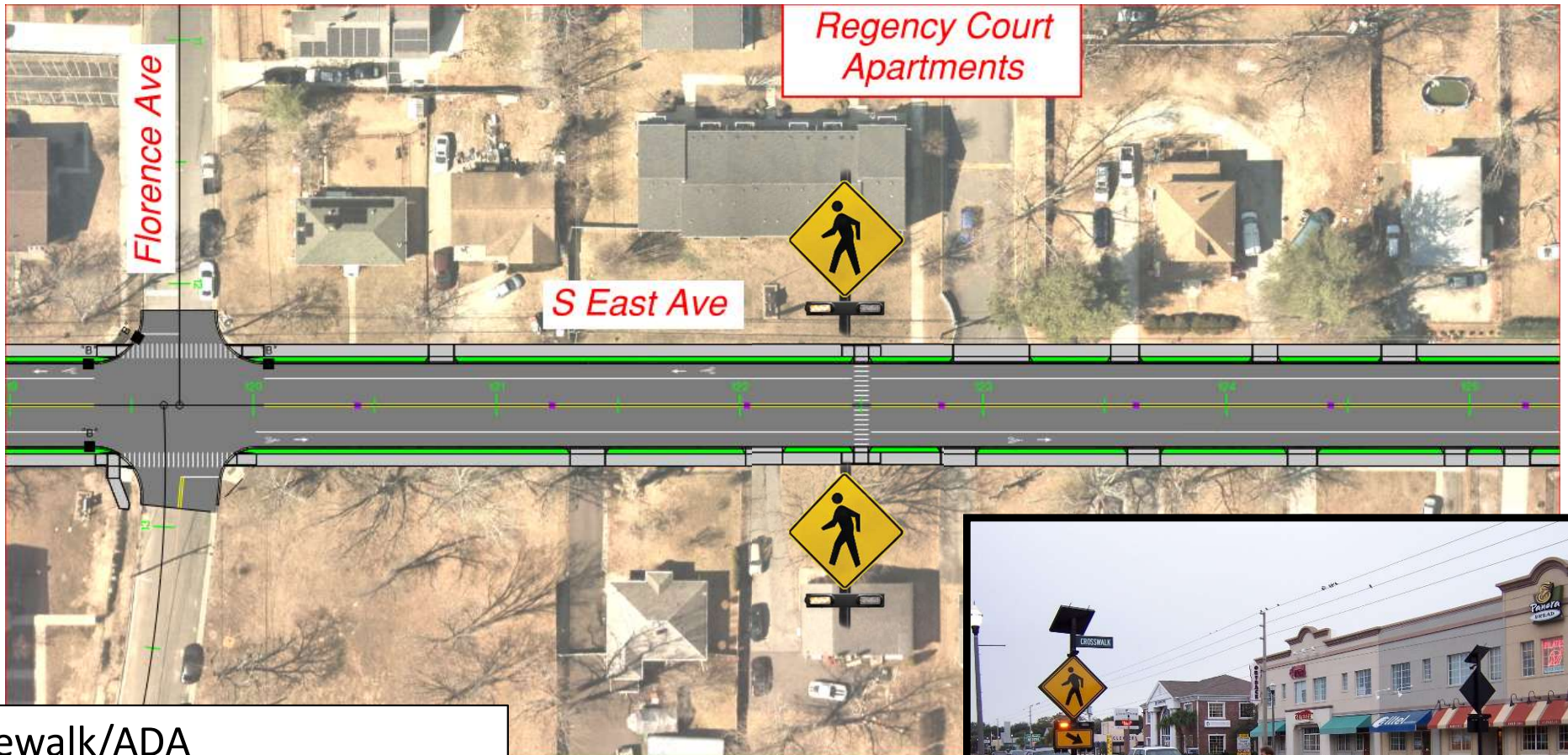
- Sidewalk/ADA
- Road Reconstruction
- Driveway Reconstruction
- High-Visibility Crosswalks
- Bike Lanes

East Avenue Pedestrian Safety Improvements



# PROPOSED IMPROVEMENTS

## S. East Ave North of E Walnut Rd



- Sidewalk/ADA
- Road Reconstruction
- Driveway Reconstruction
- High-Visibility Crosswalks
- Bike Lanes



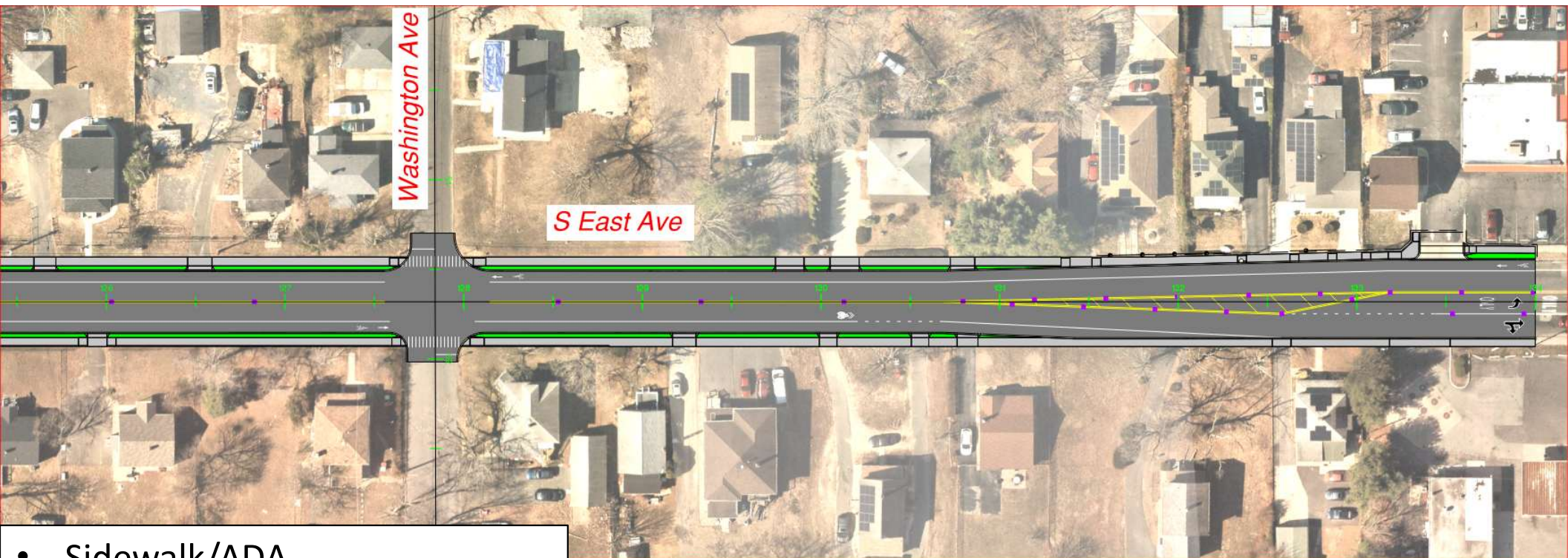
## East Avenue Pedestrian Safety Improvements





# PROPOSED IMPROVEMENTS

S. East Ave North of E Walnut Rd



- Sidewalk/ADA
- Road Reconstruction
- Driveway Reconstruction
- High-Visibility Crosswalks
- Bike Lanes

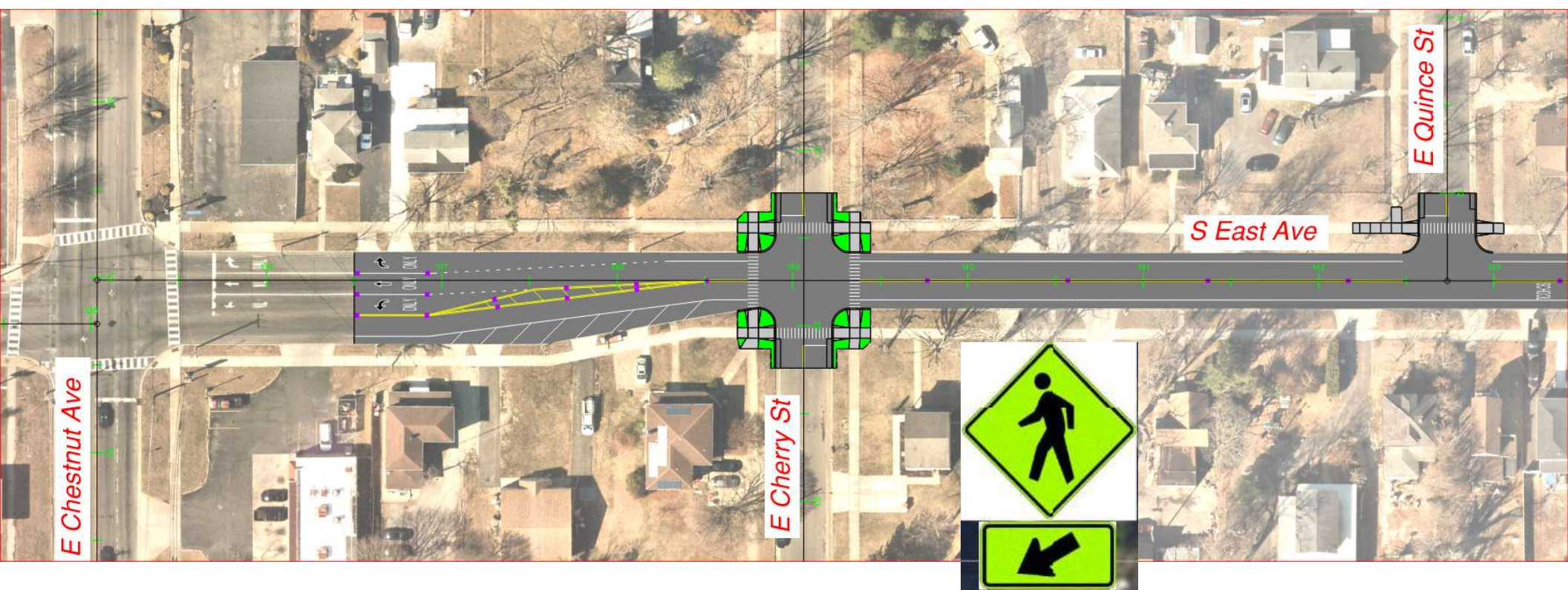
East Avenue Pedestrian Safety Improvements





# PROPOSED IMPROVEMENTS

## S. East Ave North of E Chestnut Ave



- Sidewalk/ADA
- Road Repaving
- High-Visibility Crosswalks

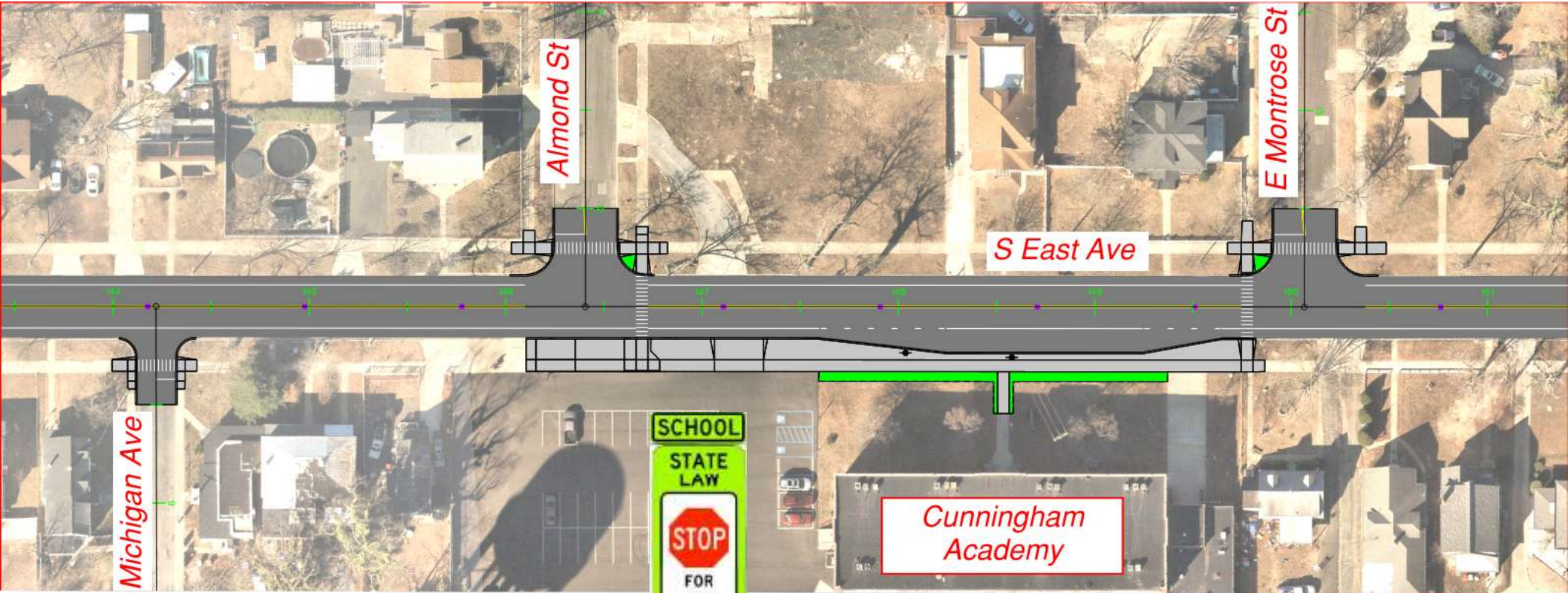
## East Avenue Pedestrian Safety Improvements





# PROPOSED IMPROVEMENTS

S. East Ave North of E Chestnut Ave



- Sidewalk/ADA
- Road Repaving
- High-Visibility Crosswalks
- Drop-Off Area at School

East Avenue Pedestrian Safety Improvements





# PROPOSED IMPROVEMENTS

## S. East Ave North of E Chestnut Ave



- Sidewalk/ADA
- Road Repaving
- High-Visibility Crosswalks

### East Avenue Pedestrian Safety Improvements





# PUBLIC INFORMATION CENTER

Monday, December 8, 2025

## QUESTIONS?



[www.sjtpo.org/safety/local-safety-program-design-assistance/](http://www.sjtpo.org/safety/local-safety-program-design-assistance/)