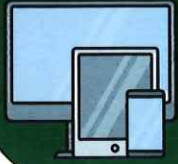


# CUMBERLAND COUNTY ELECTRONIC WASTE GUIDELINES



## ACCEPTED ITEMS:

- The following electronics are accepted at **your local drop-off center**: computer monitors, computer towers, laptops, desktop printers, fax machines, TVs including projection, wooden console, tube, flat screen, tablets, cell phones and telephones, cameras, copiers, printers, fax machines, VCRs, DVD players, radios, computer keyboards, mouse, speakers, networking peripherals, boxes, wires and cables, battery backup systems, stereos, calculators, electronic toys, and small household appliances and household electronics.



## Electronic Waste

(also called e-waste) is defined as discarded electrical or electronic equipment, such as computers, televisions, cell phones, and home appliances, that are at the end of their useful life. Cumberland County accepts any e-waste that has a cord or runs on battery.\*

**Green Wave**  
Electronics

## VISIT YOUR LOCAL DROP-OFF CENTER:

- Find your local drop-off center at [www.theauthoritynj.com/recycling-dropoff](http://www.theauthoritynj.com/recycling-dropoff).

## UNACCEPTED ITEMS\*:

- Hazardous Waste, including lithium batteries, damaged batteries, light bulbs, vapes/e-cigarettes, fire extinguishers, and chemicals must be disposed of at Household Hazardous Waste Days sponsored by The Authority. For more information, please call 856.825.3700 x1270 or visit our website at [www.theauthoritynj.com](http://www.theauthoritynj.com).

The Cumberland County Recycling Program is administered by  
The Authority  
745 Lebanon Road, Millville, NJ 08332  
856.825.3700 x1270  
[www.theauthoritynj.com](http://www.theauthoritynj.com)

