

# Stormwater Pollution Prevention Plan

*Municipality:*

*County:*

*Permit Number NJG* \_\_\_\_\_

Annual Review Date: Stormwater

Program Coordinator:

## **Table of Contents**

<b>Form 1 – Team Members .....</b>	<b>3</b>
<b>Form 2 – Revision History .....</b>	<b>4</b>
<b>Form 3 – Public Announcements.....</b>	<b>5</b>
<b>Form 4 – Post-Construction Stormwater Management in New Development and Redevelopment ...</b>	<b>6</b>
<b>Form 5 – Ordinances .....</b>	<b>8</b>
<b>Form 6 – Street Sweeping.....</b>	<b>9</b>
<b>Form 7 – MS4 Infrastructure .....</b>	<b>10</b>
<b>Form 8 – Community-wide Measures .....</b>	<b>14</b>
<b>Form 9 – Municipal Maintenance Yards &amp; Other Ancillary Operations .....</b>	<b>15</b>
<b>Form 10 – Training.....</b>	<b>19</b>
<b>Form 11 – MS4 Mapping .....</b>	<b>22</b>
<b>Form 12 – Watershed Improvement Plan .....</b>	<b>23</b>

### Form 1 – Team Members

Stormwater Program Coordinator (SPC)			
Name and Title			
Phone		Email	
Individual(s) Responsible for Major Development Project Stormwater Management Review			
Name and Title			
Phone		Email	
Name and Title			
Phone		Email	
Other Municipal Stormwater Team Members			
Name and Title			
Phone		Email	
Name and Title			
Phone		Email	
Name and Title			
Phone		Email	
Shared/Contracted Service Providers			
Provider Name	Service Provided	Term of Service	



**Form 3 – Public Announcements**  
*Part IV.B. and C.*

1. Provide the link to the dedicated stormwater webpage for your municipality.
2. List the name and title of person(s) responsible for stormwater webpage postings/updates.
3. List the newspapers, social media outlets, websites, direct mailings (Email or postal), and other communication approaches typically used to inform/educate the public on stormwater program information and related events/activities.

**Form 4 – Post-Construction Stormwater Management in New Development and Redevelopment**

*Part IV.E.*

<p>1. How does the municipality define “major development”? If it is different from the definition in N.J.A.C. 7:8, explain the difference.</p>
<p>2. Is the municipality’s stormwater control ordinance (SCO) the same as or more stringent than NJDEP’s model SCO? If more stringent, explain the difference.</p>
<p>3. Describe the process for reviewing major development project applications for compliance with the SCO and Residential Site Improvement Standards (RSIS).</p>

<p>4. Does your municipality have a mitigation plan included in your Municipal Stormwater Management Plan and Stormwater Control Ordinance? Indicate the location of records of all variances granted.</p>
<p>5. Indicate the dates of each iteration of the township's Stormwater Control Ordinance, starting with the initial adoption and including revisions.</p>
<p>6. Indicate the dates of each iteration of the township's Municipal Stormwater Management Plan, starting with the initial adoption and including revisions.</p>

**Form 5 – Ordinances**  
*Part IV.F.1.*

<b>Ordinance</b>	<b>Date Adopted</b>	<b>Was the DEP model adopted without change? If not, explain how the municipality's is more stringent.</b>	<b>Entity Responsible for Enforcement</b>	<b>Fees &amp; Fines</b>
1. Pet Waste				\$___
2. Wildlife Feeding				\$___
3. Litter Control				\$__
4. Improper Disposal of Waste				\$__
5. Yard Waste				\$___
6. Private Storm Drain Inlet Retrofitting				\$___
7. Illicit Connections				\$___
8. Privately-Owned Salt Storage				\$___
9. Tree Removal- Replacement				\$___
<b>List any additional stormwater-related ordinances the municipality has adopted that address issues beyond the scope of the MS4 permit. Include adoption date, entity responsible for enforcement, and related fees and fines.</b>				
<b>Indicate the location of records associated with ordinances and related violations and enforcement actions below.</b>				



## Form 6 – Street Sweeping

### *Part IV.F.2.a.i. and ii.*

1. Provide a written description and/or attach a map outlining the sweeping schedule for the following:

- Segments of municipal roads with storm drain inlets that discharge to surface water (required at least 3 times each year)
- Segments of municipal roads that do not have storm drain inlets but do discharge to surface water (required at least 1 time each year)

*Note: Only asphalt and concrete roads need to be swept. Roads that do not have storm drain inlets and do not discharge to surface water do not need to be swept.*

**The city of Vineland employs two (2) street sweepers to clean targeted roads three (3) times per year**

**Every municipal street inside of the highlighted area on the attached map is a targeted road.**

**The current border for the schedule is as followed:**

**Wheat Rd to Delsea Dr**

**Delsea Dr to Elmer Rd**

**Elmer Rd to Main Rd**

**Main Rd to Wheat Rd**

2. Indicate if sweeping work is outsourced and if so, describe the arrangement.

Street sweeping is not outsourced.

## Form 7 – MS4 Infrastructure

*Part IV.F.2-4. and Part IV.G.2-3.*

### **1. Municipal Storm Drain Inlets**

- a. Describe how you ensure that municipal inlets without permanent wording cast into the design have been properly labelled.
- b. Describe how you ensure that municipal and private storm drain inlets have been retrofitted.
- c. Describe how you ensure that newly installed storm drain inlets include corresponding catch basins or other BMPs to collect solids.
- d. Describe when and how you conduct inspections of storm drain inlets and the criteria used to determine when they need to be cleaned.

### **2. Municipal Catch Basins**

- a. Describe when and how you conduct inspections of catch basins.
- b. Describe the criteria used to determine when catch basins need to be cleaned.

**3. Municipal Conveyance System**

Describe when and how inspections of MS4 conveyance systems are conducted, and the criteria used to determine when they need to be cleaned. Include a description of the equipment and techniques used.

**4. Municipal Outfall Inspections – Stream Scouring**

Describe the program in place to detect, investigate, and control localized stream scouring from stormwater outfalls. Include a description of the equipment and techniques used.

**5. Municipal Outfall Inspections – Illicit Discharge Detection and Elimination**

Describe the program in place for conducting visual dry weather inspections of municipally owned or operated outfalls. Include a description of the equipment and techniques used. Record cases of illicit discharges using the DEP’s Illicit Connection Inspection Report Form from the Department’s main stormwater webpage.

**6. Other Municipal Infrastructure**

List the types of MS4 infrastructure in your town that require inspection but are not noted above in items 1-5. Describe when and how you conduct inspections of this infrastructure and the criteria used to determine when they need to be maintained and/or cleaned.

**7. Stormwater Facilities Not Owned or Operated by the Municipality**

Describe your program for ensuring adequate long-term cleaning, operation, and maintenance of stormwater facilities not owned or operated by the municipality. This should include your plan for ensuring annual inspections are being done on these private properties and describe how you record the locations and logs associated with private infrastructure.

**8. Infrastructure Records**

Indicate the location of records related to stormwater infrastructure inspection, cleaning, maintenance, and repair activities.

## Form 8 – Community-wide Measures

### Part IV.F.2.

<p><b>1. Herbicide Application Management</b> Describe your program for preventing herbicides from being washed into the waters of the State and to prevent erosion caused by de-vegetation.</p>
<p><b>2. Excess Deicing Material Management</b> Describe your program for ensuring that excess salt piles are removed in a timely manner after storm events.</p>
<p><b>3. Roadside Vegetative Waste</b> Describe your program for ensuring proper pickup, handling, storage, and disposal of wood waste and yard trimmings generated by the permittee along municipal roads or on municipal properties (trimming trees, mowing, etc.).</p>
<p><b>4. Roadside Erosion Control</b> Describe your program to detect and repair erosion along municipal roadways.</p>

# Form 9 – Municipal Maintenance Yards & Other Ancillary Operations

## Part IV.F.5.

*Please complete a separate Form 9 for each yard or site. Indicate the number of yards/sites the municipality owns or operates: \_\_\_\_\_*

<b>1. Site Name and Address</b>	
<b>2. Monthly Site Inspections</b>	
Describe the nature of inspections conducted at this site and the location of inspection logs.	
<b>3. Inventory List</b>	
List all materials and machinery that are potentially exposed to stormwater.	
<b>Materials</b>	<b>Machinery/Equipment</b>

<p><b>4. Discharge of Stormwater from Secondary Containment</b> Describe the process in place for discharging stormwater from secondary containment areas where outdoor containers are stored.</p>
<p><b>5. Fueling Operations</b> Does fueling occur on site? If so, describe the BMPs in place to minimize contamination of stormwater from fueling activities. If not, explain where fueling takes place.</p>
<p><b>6. Vehicle/Equipment Maintenance and Repair</b> Do you perform maintenance and repair on site? Is this conducted indoors or outdoors? If outdoors, describe the BMPs in place to minimize contamination of stormwater from maintenance and repair activities.</p>
<p><b>7. Wash Wastewater Containment</b> Do you wash vehicles on site? If so, describe the BMPs in place to minimize contamination of stormwater from these activities. Note that on site containment structures require annual inspections by a NJ licensed professional engineer. If not, explain where vehicle washing takes place.</p>



**8. Salt and Other Granular De-icing Materials**

Do you store salt and other granular deicing materials on site? If so, describe how they are stored and the BMPs in place to minimize contamination of stormwater from these materials. If not, explain where these materials are stored.

**9. Aggregate Material, Wood Chips, and Finished Leaf Compost**

Do you store these materials on site? If so, describe how they are stored and the BMPs in place to minimize contamination of stormwater from these materials. If not, explain where these materials are stored.

**10. Cold Patch Asphalt**

Do you store these materials on site? If so, describe how they are stored and the BMPs in place to minimize contamination of stormwater from these materials. If not, explain where these materials are stored.

**11. Street Sweepings and Storm Sewer Cleanout Materials**

Do you store these materials on site? If so, describe how they are stored and the BMPs in place to minimize contamination of stormwater from these materials. If not, explain where these materials are stored.

**12. Construction and Demolition Waste, Wood Waste, and Yard Trimmings**

Do you store these materials on site? If so, describe how they are stored and the BMPs in place to minimize contamination of stormwater from these materials. If not, explain where these materials are stored.

**13. Scrap Tires**

Do you store these materials on site? If so, describe how they are stored and the BMPs in place to minimize contamination of stormwater from these materials. If not, explain where these materials are stored.

**14. Inoperable Vehicles and Equipment**

Do you store inoperable vehicles or equipment on site? If so, describe how they are stored and the BMPs in place to minimize contamination of stormwater. If not, explain where they are stored.

## Form 10 – Training

### *Part IV.F.6-10.*

<b>Stormwater Program Coordinators</b>
Describe the training provided for the municipal Stormwater Program Coordinator.

<b>Topic</b>	<b>Municipal Employees</b> Examples: in-person or virtual group sessions, e-Learning, field trainings, and videos
Describe the training provided for municipal staff.	
SPPP	
Construction Site Stormwater Runoff	
Post-Construction Stormwater Management in New and Redevelopment	
Community-wide Ordinances	
Community-wide Measures	

Stormwater Facilities Maintenance	
Municipal Maintenance Yards and Other Ancillary Operations	
MS4 Mapping	
Outfall Stream Scouring	
Illicit Discharge Detection and Elimination	

<b>Stormwater Management Design Reviewers</b>
Describe the training provided for individuals responsible for reviews and approvals of stormwater management designs.

**Municipal Board and Governing Body Members**

Describe the training provided for members of the planning/zoning board and municipal council.

--

**Training Records**

Indicate the location of training records for the above required training.

--

## Form 11 – MS4 Mapping

### *Part IV.G.1.*

1. Provide a link to the most current MS4 outfall/infrastructure map.	
2. Indicate the total of each type of MS4 infrastructure listed below (due 01 Jan 2026).	
a. MS4 outfalls	
b. MS4 ground water discharge points (basins or overland flow infiltration areas)	
c. MS4 interconnections	
d. MS4 storm drain inlets	
e. MS4 manholes	
f. Length of conveyance (channels, pipes, ditches, etc.)	
g. MS4 pump stations	
h. MS4 stormwater facilities (any that are not listed above)	
i. Maintenance yard(s) and other ancillary operations	
3. Describe how the municipality’s outfall/infrastructure map is reviewed and updated to reflect any new or newly identified MS4 infrastructure (e.g., an outfall is closed, a new basin is constructed, ownership of an outfall has changed, etc.).	
4. Describe how the municipality will create and update its MS4 Infrastructure Map.	

**Form 12 – Watershed Improvement Plan**

*Part IV.H.*

1. Describe how your municipality is developing its Watershed Improvement Plan.
2. Describe any regional projects or collaboration efforts with other municipalities.
3. Indicate the location of records related to all public information sessions and meetings for discussions of the Watershed Improvement Plan.

## Form 6 – Street Sweeping

*Part IV.F.2.a.i. and ii.*

1. Provide a written description and/or attach a map outlining the sweeping schedule for the following:

- Segments of municipal roads with storm drain inlets that discharge to surface water (required at least 3 times each year)
- Segments of municipal roads that do not have storm drain inlets but do discharge to surface water (required at least 1 time each year)

*Note: Only asphalt and concrete roads need to be swept. Roads that do not have storm drain inlets and do not discharge to surface water do not need to be swept.*

**The city of Vineland employs two (2) street sweepers to clean targeted roads three (3) times per year**

**Every municipal street inside of the highlighted area on the attached map is a targeted road.**

**The current border for the schedule is as followed:**

**Wheat Rd to Delsea Dr**

**Delsea Dr to Elmer Rd**

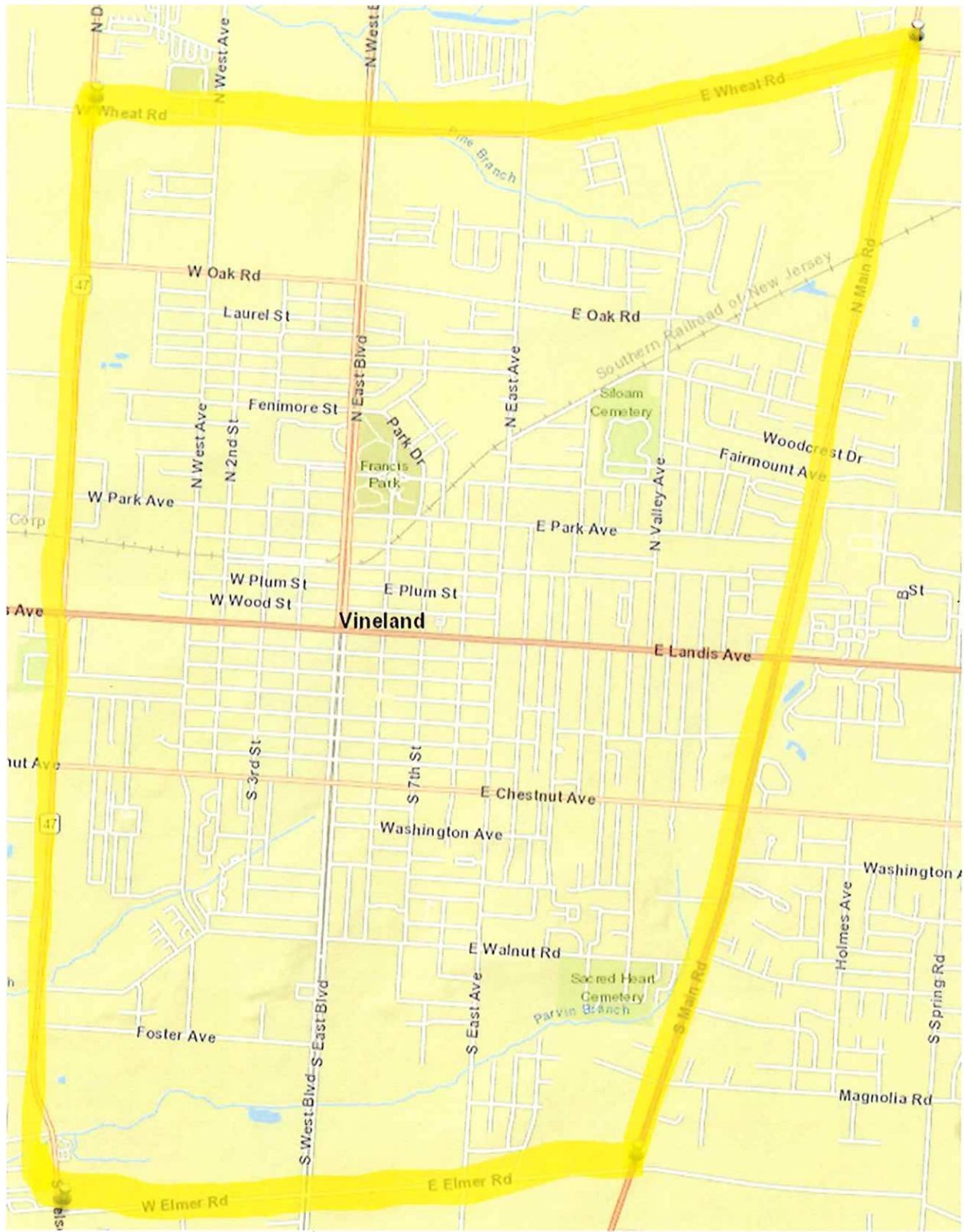
**Elmer Rd to Main Rd**

**Main Rd to Wheat Rd**

2. Indicate if sweeping work is outsourced and if so, describe the arrangement.

Street sweeping is not outsourced.





## Form 9 – Municipal Maintenance Yards & Other Ancillary Operations

### Part IV.F.5.

*Please complete a separate Form 9 for each yard or site. Indicate the number of yards/sites the municipality owns or operates: 7*

<b>1. Site Name and Address</b>	
Water Utility 330 E. Walnut Rd.	
<b>2. Monthly Site Inspections</b> Describe the nature of inspections conducted at this site and the location of inspection logs.	
Visually inspect the site to ensure BMPs are in operation	
<b>3. Inventory List</b> List all materials and machinery that are potentially exposed to stormwater.	
<b>Materials</b>	<b>Machinery/Equipment</b>
Dirt	Trucks
metal	Truck attachments
asphalt	

<p><b>4. Discharge of Stormwater from Secondary Containment</b> Describe the process in place for discharging stormwater from secondary containment areas where outdoor containers are stored.</p>
<p>N/a</p>
<p><b>5. Fueling Operations</b> Does fueling occur on site? If so, describe the BMPs in place to minimize contamination of stormwater from fueling activities. If not, explain where fueling takes place.</p>
<p>N/a</p>
<p><b>6. Vehicle/Equipment Maintenance and Repair</b> Do you perform maintenance and repair on site? Is this conducted indoors or outdoors? If outdoors, describe the BMPs in place to minimize contamination of stormwater from maintenance and repair activities.</p>
<p>Yes, indoors.</p>
<p><b>7. Wash Wastewater Containment</b> Do you wash vehicles on site? If so, describe the BMPs in place to minimize contamination of stormwater from these activities. Note that on site containment structures require annual inspections by a NJ licensed professional engineer. If not, explain where vehicle washing takes place.</p>
<p>No.</p>

<p><b>8. Salt and Other Granular De-icing Materials</b> Do you store salt and other granular deicing materials on site? If so, describe how they are stored and the BMPs in place to minimize contamination of stormwater from these materials. If not, explain where these materials are stored.</p>
<p>No.</p>
<p><b>9. Aggregate Material, Wood Chips, and Finished Leaf Compost</b> Do you store these materials on site? If so, describe how they are stored and the BMPs in place to minimize contamination of stormwater from these materials. If not, explain where these materials are stored.</p>
<p>No.</p>
<p><b>10. Cold Patch Asphalt</b> Do you store these materials on site? If so, describe how they are stored and the BMPs in place to minimize contamination of stormwater from these materials. If not, explain where these materials are stored.</p>
<p>Yes. Stored underneath waterproof container.</p>
<p><b>11. Street Sweepings and Storm Sewer Cleanout Materials</b> Do you store these materials on site? If so, describe how they are stored and the BMPs in place to minimize contamination of stormwater from these materials. If not, explain where these materials are stored.</p>
<p>No</p>

<p><b>12. Construction and Demolition Waste, Wood Waste, and Yard Trimmings</b>  Do you store these materials on site? If so, describe how they are stored and the BMPs in place to minimize contamination of stormwater from these materials. If not, explain where these materials are stored.</p>
<p>Yes, stored in 3-sided bin</p>
<p><b>13. Scrap Tires</b>  Do you store these materials on site? If so, describe how they are stored and the BMPs in place to minimize contamination of stormwater from these materials. If not, explain where these materials are stored.</p>
<p>No.</p>
<p><b>14. Inoperable Vehicles and Equipment</b>  Do you store inoperable vehicles or equipment on site? If so, describe how they are stored and the BMPs in place to minimize contamination of stormwater. If not, explain where they are stored.</p>
<p>No</p>

## Form 9 – Municipal Maintenance Yards & Other Ancillary Operations

*Part IV.F.5.*

*Please complete a separate Form 9 for each yard or site. Indicate the number of yards/sites the municipality owns or operates: 7*

<b>1. Site Name and Address</b>	
Masonry & Recreational Yard 1045 E. Butler Ave	
<b>2. Monthly Site Inspections</b>	
Describe the nature of inspections conducted at this site and the location of inspection logs.	
Visually inspect the site to ensure BMPs are in operation	
<b>3. Inventory List</b>	
List all materials and machinery that are potentially exposed to stormwater.	
<b>Materials</b>	<b>Machinery/Equipment</b>
Dirt	truck attachments
Concrete	

<p><b>4. Discharge of Stormwater from Secondary Containment</b> Describe the process in place for discharging stormwater from secondary containment areas where outdoor containers are stored.</p>
<p>N/a</p>
<p><b>5. Fueling Operations</b> Does fueling occur on site? If so, describe the BMPs in place to minimize contamination of stormwater from fueling activities. If not, explain where fueling takes place.</p>
<p>N/a</p>
<p><b>6. Vehicle/Equipment Maintenance and Repair</b> Do you perform maintenance and repair on site? Is this conducted indoors or outdoors? If outdoors, describe the BMPs in place to minimize contamination of stormwater from maintenance and repair activities.</p>
<p>No.</p>
<p><b>7. Wash Wastewater Containment</b> Do you wash vehicles on site? If so, describe the BMPs in place to minimize contamination of stormwater from these activities. Note that on site containment structures require annual inspections by a NJ licensed professional engineer. If not, explain where vehicle washing takes place.</p>
<p>No.</p>

<p><b>8. Salt and Other Granular De-icing Materials</b>  Do you store salt and other granular deicing materials on site? If so, describe how they are stored and the BMPs in place to minimize contamination of stormwater from these materials. If not, explain where these materials are stored.</p>
<p>No.</p>
<p><b>9. Aggregate Material, Wood Chips, and Finished Leaf Compost</b>  Do you store these materials on site? If so, describe how they are stored and the BMPs in place to minimize contamination of stormwater from these materials. If not, explain where these materials are stored.</p>
<p>No.</p>
<p><b>10. Cold Patch Asphalt</b>  Do you store these materials on site? If so, describe how they are stored and the BMPs in place to minimize contamination of stormwater from these materials. If not, explain where these materials are stored.</p>
<p>No.</p>
<p><b>11. Street Sweepings and Storm Sewer Cleanout Materials</b>  Do you store these materials on site? If so, describe how they are stored and the BMPs in place to minimize contamination of stormwater from these materials. If not, explain where these materials are stored.</p>
<p>No</p>



<p><b>12. Construction and Demolition Waste, Wood Waste, and Yard Trimmings</b>  Do you store these materials on site? If so, describe how they are stored and the BMPs in place to minimize contamination of stormwater from these materials. If not, explain where these materials are stored.</p>
<p>No.</p>
<p><b>13. Scrap Tires</b>  Do you store these materials on site? If so, describe how they are stored and the BMPs in place to minimize contamination of stormwater from these materials. If not, explain where these materials are stored.</p>
<p>No. If any scrap tires are received, they are immediately sent to the vehicle maintenance yard.</p>
<p><b>14. Inoperable Vehicles and Equipment</b>  Do you store inoperable vehicles or equipment on site? If so, describe how they are stored and the BMPs in place to minimize contamination of stormwater. If not, explain where they are stored.</p>
<p>No</p>

**Form 9 – Municipal Maintenance Yards & Other Ancillary Operations**  
*Part IV.F.5.*

*Please complete a separate Form 9 for each yard or site. Indicate the number of yards/sites the municipality owns or operates: \_\_\_\_\_*

<b>1. Site Name and Address</b>	
Union Road Yard 2175 Union Rd	
<b>2. Monthly Site Inspections</b> Describe the nature of inspections conducted at this site and the location of inspection logs.	
Visually inspect compost piles to ensure that screened and unscreened are separate.	
<b>3. Inventory List</b> List all materials and machinery that are potentially exposed to stormwater.	
<b>Materials</b>	<b>Machinery/Equipment</b>
Compost	

<p><b>4. Discharge of Stormwater from Secondary Containment</b> Describe the process in place for discharging stormwater from secondary containment areas where outdoor containers are stored.</p>
<p>No outdoor containers are stored on site.</p>
<p><b>5. Fueling Operations</b> Does fueling occur on site? If so, describe the BMPs in place to minimize contamination of stormwater from fueling activities. If not, explain where fueling takes place.</p>
<p>No</p>
<p><b>6. Vehicle/Equipment Maintenance and Repair</b> Do you perform maintenance and repair on site? Is this conducted indoors or outdoors? If outdoors, describe the BMPs in place to minimize contamination of stormwater from maintenance and repair activities.</p>
<p>No</p>
<p><b>7. Wash Wastewater Containment</b> Do you wash vehicles on site? If so, describe the BMPs in place to minimize contamination of stormwater from these activities. Note that on site containment structures require annual inspections by a NJ licensed professional engineer. If not, explain where vehicle washing takes place.</p>
<p>No</p>

<p><b>8. Salt and Other Granular De-icing Materials</b> Do you store salt and other granular deicing materials on site? If so, describe how they are stored and the BMPs in place to minimize contamination of stormwater from these materials. If not, explain where these materials are stored.</p>
<p>No</p>
<p><b>9. Aggregate Material, Wood Chips, and Finished Leaf Compost</b> Do you store these materials on site? If so, describe how they are stored and the BMPs in place to minimize contamination of stormwater from these materials. If not, explain where these materials are stored.</p>
<p>Screened and unsorted compost are kept separate from each other. Piles are stored from oldest to newest . There is no surface water within 50 feet of any pile. Small holes on driving surface (sand) are filled in when needed in order to ensure water does not collect in them.</p>
<p><b>10. Cold Patch Asphalt</b> Do you store these materials on site? If so, describe how they are stored and the BMPs in place to minimize contamination of stormwater from these materials. If not, explain where these materials are stored.</p>
<p>No</p>
<p><b>11. Street Sweepings and Storm Sewer Cleanout Materials</b> Do you store these materials on site? If so, describe how they are stored and the BMPs in place to minimize contamination of stormwater from these materials. If not, explain where these materials are stored.</p>
<p>No</p>

<p><b>12. Construction and Demolition Waste, Wood Waste, and Yard Trimmings</b>  Do you store these materials on site? If so, describe how they are stored and the BMPs in place to minimize contamination of stormwater from these materials. If not, explain where these materials are stored.</p>
<p>No</p>
<p><b>13. Scrap Tires</b>  Do you store these materials on site? If so, describe how they are stored and the BMPs in place to minimize contamination of stormwater from these materials. If not, explain where these materials are stored.</p>
<p>No</p>
<p><b>14. Inoperable Vehicles and Equipment</b>  Do you store inoperable vehicles or equipment on site? If so, describe how they are stored and the BMPs in place to minimize contamination of stormwater. If not, explain where they are stored.</p>
<p>No</p>

**Form 9 – Municipal Maintenance Yards & Other Ancillary Operations**  
*Part IV.F.5.*

*Please complete a separate Form 9 for each yard or site. Indicate the number of yards/sites the municipality owns or operates: \_\_\_\_\_*

<b>1. Site Name and Address</b>	
Electrical Distribution Yard 415 North West Avenue	
<b>2. Monthly Site Inspections</b>	
Describe the nature of inspections conducted at this site and the location of inspection logs.	
Visually inspect the site to check for leaks and compliance with all requirements.	
<b>3. Inventory List</b>	
List all materials and machinery that are potentially exposed to stormwater.	
<b>Materials</b>	<b>Machinery/Equipment</b>
glass	trucks
metal	electrical equipment
dirt	
wood telephone poles	

<p><b>4. Discharge of Stormwater from Secondary Containment</b> Describe the process in place for discharging stormwater from secondary containment areas where outdoor containers are stored.</p>
<p>N/a</p>
<p><b>5. Fueling Operations</b> Does fueling occur on site? If so, describe the BMPs in place to minimize contamination of stormwater from fueling activities. If not, explain where fueling takes place.</p>
<p>Yes, spill kits are available and drip pans are used during bulk transfers.</p>
<p><b>6. Vehicle/Equipment Maintenance and Repair</b> Do you perform maintenance and repair on site? Is this conducted indoors or outdoors? If outdoors, describe the BMPs in place to minimize contamination of stormwater from maintenance and repair activities.</p>
<p>Yes, indoors.</p>
<p><b>7. Wash Wastewater Containment</b> Do you wash vehicles on site? If so, describe the BMPs in place to minimize contamination of stormwater from these activities. Note that on site containment structures require annual inspections by a NJ licensed professional engineer. If not, explain where vehicle washing takes place.</p>
<p>Vehicles are washed inside.</p>

<p><b>8. Salt and Other Granular De-icing Materials</b>  Do you store salt and other granular deicing materials on site? If so, describe how they are stored and the BMPs in place to minimize contamination of stormwater from these materials. If not, explain where these materials are stored.</p>
<p>No</p>
<p><b>9. Aggregate Material, Wood Chips, and Finished Leaf Compost</b>  Do you store these materials on site? If so, describe how they are stored and the BMPs in place to minimize contamination of stormwater from these materials. If not, explain where these materials are stored.</p>
<p>No.</p>
<p><b>10. Cold Patch Asphalt</b>  Do you store these materials on site? If so, describe how they are stored and the BMPs in place to minimize contamination of stormwater from these materials. If not, explain where these materials are stored.</p>
<p>No</p>
<p><b>11. Street Sweepings and Storm Sewer Cleanout Materials</b>  Do you store these materials on site? If so, describe how they are stored and the BMPs in place to minimize contamination of stormwater from these materials. If not, explain where these materials are stored.</p>
<p>No</p>



<p><b>12. Construction and Demolition Waste, Wood Waste, and Yard Trimmings</b>  Do you store these materials on site? If so, describe how they are stored and the BMPs in place to minimize contamination of stormwater from these materials. If not, explain where these materials are stored.</p>
<p>No</p>
<p><b>13. Scrap Tires</b>  Do you store these materials on site? If so, describe how they are stored and the BMPs in place to minimize contamination of stormwater from these materials. If not, explain where these materials are stored.</p>
<p>No</p>
<p><b>14. Inoperable Vehicles and Equipment</b>  Do you store inoperable vehicles or equipment on site? If so, describe how they are stored and the BMPs in place to minimize contamination of stormwater. If not, explain where they are stored.</p>
<p>No</p>

**Form 9 – Municipal Maintenance Yards & Other Ancillary Operations**  
*Part IV.F.5.*

*Please complete a separate Form 9 for each yard or site. Indicate the number of yards/sites the municipality owns or operates: \_\_\_\_\_*

<b>1. Site Name and Address</b>	
Closed Landfill 1271 South Mill Road	
<b>2. Monthly Site Inspections</b> Describe the nature of inspections conducted at this site and the location of inspection logs.	
Visually inspect to ensure the compliance of each requirement.	
<b>3. Inventory List</b> List all materials and machinery that are potentially exposed to stormwater.	
<b>Materials</b>	<b>Machinery/Equipment</b>
waste	trucks
recycled material	wood chipper

<p><b>4. Discharge of Stormwater from Secondary Containment</b> Describe the process in place for discharging stormwater from secondary containment areas where outdoor containers are stored.</p>
<p>A vacuum truck comes to pump out secondary containment so it can be disposed of properly.</p>
<p><b>5. Fueling Operations</b> Does fueling occur on site? If so, describe the BMPs in place to minimize contamination of stormwater from fueling activities. If not, explain where fueling takes place.</p>
<p>No</p>
<p><b>6. Vehicle/Equipment Maintenance and Repair</b> Do you perform maintenance and repair on site? Is this conducted indoors or outdoors? If outdoors, describe the BMPs in place to minimize contamination of stormwater from maintenance and repair activities.</p>
<p>No</p>
<p><b>7. Wash Wastewater Containment</b> Do you wash vehicles on site? If so, describe the BMPs in place to minimize contamination of stormwater from these activities. Note that on site containment structures require annual inspections by a NJ licensed professional engineer. If not, explain where vehicle washing takes place.</p>
<p>No</p>

<p><b>8. Salt and Other Granular De-icing Materials</b> Do you store salt and other granular deicing materials on site? If so, describe how they are stored and the BMPs in place to minimize contamination of stormwater from these materials. If not, explain where these materials are stored.</p>
<p>No</p>
<p><b>9. Aggregate Material, Wood Chips, and Finished Leaf Compost</b> Do you store these materials on site? If so, describe how they are stored and the BMPs in place to minimize contamination of stormwater from these materials. If not, explain where these materials are stored.</p>
<p>Yes. Everything is stored well over 50 feet away from inlet or surface water.</p>
<p><b>10. Cold Patch Asphalt</b> Do you store these materials on site? If so, describe how they are stored and the BMPs in place to minimize contamination of stormwater from these materials. If not, explain where these materials are stored.</p>
<p>No</p>
<p><b>11. Street Sweepings and Storm Sewer Cleanout Materials</b> Do you store these materials on site? If so, describe how they are stored and the BMPs in place to minimize contamination of stormwater from these materials. If not, explain where these materials are stored.</p>
<p>Yes, street sweepings are kept in a large waterproof enclosure over 50 feet away from any inlets or surface water. Street sweepings are removed at the end of every week.</p>

<p><b>12. Construction and Demolition Waste, Wood Waste, and Yard Trimmings</b>  Do you store these materials on site? If so, describe how they are stored and the BMPs in place to minimize contamination of stormwater from these materials. If not, explain where these materials are stored.</p>
<p>Yes. Stored in 3-sided bays over 50 feet away from all inlets and surface water.</p>
<p><b>13. Scrap Tires</b>  Do you store these materials on site? If so, describe how they are stored and the BMPs in place to minimize contamination of stormwater from these materials. If not, explain where these materials are stored.</p>
<p>No.</p>
<p><b>14. Inoperable Vehicles and Equipment</b>  Do you store inoperable vehicles or equipment on site? If so, describe how they are stored and the BMPs in place to minimize contamination of stormwater. If not, explain where they are stored.</p>
<p>No.</p>

**Form 9 – Municipal Maintenance Yards & Other Ancillary Operations**  
*Part IV.F.5.*

*Please complete a separate Form 9 for each yard or site. Indicate the number of yards/sites the municipality owns or operates: \_\_\_\_\_*

<b>1. Site Name and Address</b>	
Public Works 1086 E. Walnut Road	
<b>2. Monthly Site Inspections</b> Describe the nature of inspections conducted at this site and the location of inspection logs.	
Visually inspect all areas to see if there are any visible signs of spills or leaks.	
<b>3. Inventory List</b> List all materials and machinery that are potentially exposed to stormwater.	
<b>Materials</b>	<b>Machinery/Equipment</b>
aggregates	Trucks
De-icing materials	equipment attachments

<p><b>4. Discharge of Stormwater from Secondary Containment</b> Describe the process in place for discharging stormwater from secondary containment areas where outdoor containers are stored.</p>
<p>There is no secondary containment on this site.</p>
<p><b>5. Fueling Operations</b> Does fueling occur on site? If so, describe the BMPs in place to minimize contamination of stormwater from fueling activities. If not, explain where fueling takes place.</p>
<p>Yes. Spill kits are readily available.</p>
<p><b>6. Vehicle/Equipment Maintenance and Repair</b> Do you perform maintenance and repair on site? Is this conducted indoors or outdoors? If outdoors, describe the BMPs in place to minimize contamination of stormwater from maintenance and repair activities.</p>
<p>No.</p>
<p><b>7. Wash Wastewater Containment</b> Do you wash vehicles on site? If so, describe the BMPs in place to minimize contamination of stormwater from these activities. Note that on site containment structures require annual inspections by a NJ licensed professional engineer. If not, explain where vehicle washing takes place.</p>
<p>No.</p>

<p><b>8. Salt and Other Granular De-icing Materials</b> Do you store salt and other granular deicing materials on site? If so, describe how they are stored and the BMPs in place to minimize contamination of stormwater from these materials. If not, explain where these materials are stored.</p>
<p>Yes. Salt is stored in an enclosed warehouse safe from stormwater.</p>
<p><b>9. Aggregate Material, Wood Chips, and Finished Leaf Compost</b> Do you store these materials on site? If so, describe how they are stored and the BMPs in place to minimize contamination of stormwater from these materials. If not, explain where these materials are stored.</p>
<p>Aggregate is separated by 3-sided bays away from any inlets or surface water.</p>
<p><b>10. Cold Patch Asphalt</b> Do you store these materials on site? If so, describe how they are stored and the BMPs in place to minimize contamination of stormwater from these materials. If not, explain where these materials are stored.</p>
<p>Yes, cold patch asphalt is kept covered up at all times.</p>
<p><b>11. Street Sweepings and Storm Sewer Cleanout Materials</b> Do you store these materials on site? If so, describe how they are stored and the BMPs in place to minimize contamination of stormwater from these materials. If not, explain where these materials are stored.</p>
<p>No.</p>



<p><b>12. Construction and Demolition Waste, Wood Waste, and Yard Trimmings</b>  Do you store these materials on site? If so, describe how they are stored and the BMPs in place to minimize contamination of stormwater from these materials. If not, explain where these materials are stored.</p>
<p>No.</p>
<p><b>13. Scrap Tires</b>  Do you store these materials on site? If so, describe how they are stored and the BMPs in place to minimize contamination of stormwater from these materials. If not, explain where these materials are stored.</p>
<p>No.</p>
<p><b>14. Inoperable Vehicles and Equipment</b>  Do you store inoperable vehicles or equipment on site? If so, describe how they are stored and the BMPs in place to minimize contamination of stormwater. If not, explain where they are stored.</p>
<p>No.</p>

**Form 9 – Municipal Maintenance Yards & Other Ancillary Operations**  
*Part IV.F.5.*

*Please complete a separate Form 9 for each yard or site. Indicate the number of yards/sites the municipality owns or operates: \_\_\_\_\_*

<b>1. Site Name and Address</b>	
Vehicle maintenance 57 West Park Avenue	
<b>2. Monthly Site Inspections</b> Describe the nature of inspections conducted at this site and the location of inspection logs.	
Walk around and inspect the entire premise to make sure all vehicle maintenance is done inside. Also, inspect all containers contributing to the car wash to check for any signs of damage or leaks.	
<b>3. Inventory List</b> List all materials and machinery that are potentially exposed to stormwater.	
<b>Materials</b>	<b>Machinery/Equipment</b>
All materials are kept away from the rain.	All equipment is stored away from the rain.

<p><b>4. Discharge of Stormwater from Secondary Containment</b> Describe the process in place for discharging stormwater from secondary containment areas where outdoor containers are stored.</p>
<p>All containers are kept inside or under a overhang.</p>
<p><b>5. Fueling Operations</b> Does fueling occur on site? If so, describe the BMPs in place to minimize contamination of stormwater from fueling activities. If not, explain where fueling takes place.</p>
<p>No.</p>
<p><b>6. Vehicle/Equipment Maintenance and Repair</b> Do you perform maintenance and repair on site? Is this conducted indoors or outdoors? If outdoors, describe the BMPs in place to minimize contamination of stormwater from maintenance and repair activities.</p>
<p>All repairs are done indoors.</p>
<p><b>7. Wash Wastewater Containment</b> Do you wash vehicles on site? If so, describe the BMPs in place to minimize contamination of stormwater from these activities. Note that on site containment structures require annual inspections by a NJ licensed professional engineer. If not, explain where vehicle washing takes place.</p>
<p>Vehicles are washed in an automatic car wash. The water goes through a separator and then to LSA.</p>

<p><b>8. Salt and Other Granular De-icing Materials</b>  Do you store salt and other granular deicing materials on site? If so, describe how they are stored and the BMPs in place to minimize contamination of stormwater from these materials. If not, explain where these materials are stored.</p>
No.
<p><b>9. Aggregate Material, Wood Chips, and Finished Leaf Compost</b>  Do you store these materials on site? If so, describe how they are stored and the BMPs in place to minimize contamination of stormwater from these materials. If not, explain where these materials are stored.</p>
No.
<p><b>10. Cold Patch Asphalt</b>  Do you store these materials on site? If so, describe how they are stored and the BMPs in place to minimize contamination of stormwater from these materials. If not, explain where these materials are stored.</p>
No.
<p><b>11. Street Sweepings and Storm Sewer Cleanout Materials</b>  Do you store these materials on site? If so, describe how they are stored and the BMPs in place to minimize contamination of stormwater from these materials. If not, explain where these materials are stored.</p>
No.

<p><b>12. Construction and Demolition Waste, Wood Waste, and Yard Trimmings</b>  Do you store these materials on site? If so, describe how they are stored and the BMPs in place to minimize contamination of stormwater from these materials. If not, explain where these materials are stored.</p>
<p>No.</p>
<p><b>13. Scrap Tires</b>  Do you store these materials on site? If so, describe how they are stored and the BMPs in place to minimize contamination of stormwater from these materials. If not, explain where these materials are stored.</p>
<p>No.</p>
<p><b>14. Inoperable Vehicles and Equipment</b>  Do you store inoperable vehicles or equipment on site? If so, describe how they are stored and the BMPs in place to minimize contamination of stormwater. If not, explain where they are stored.</p>
<p>All inoperable vehicles are free from oil and gas. They are covered by waterproof covering.</p>