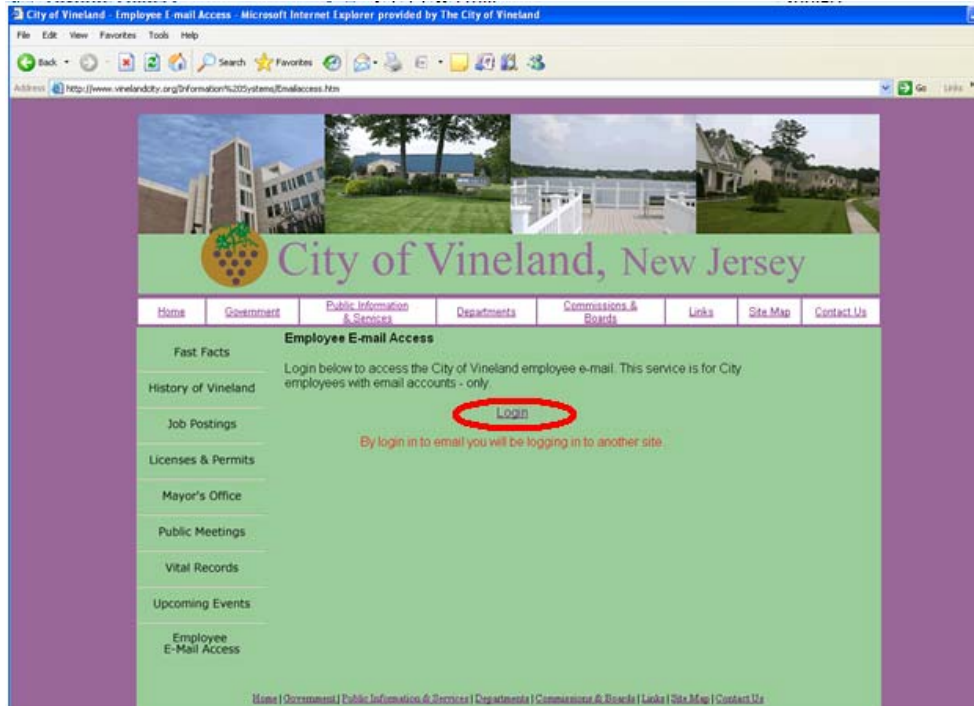


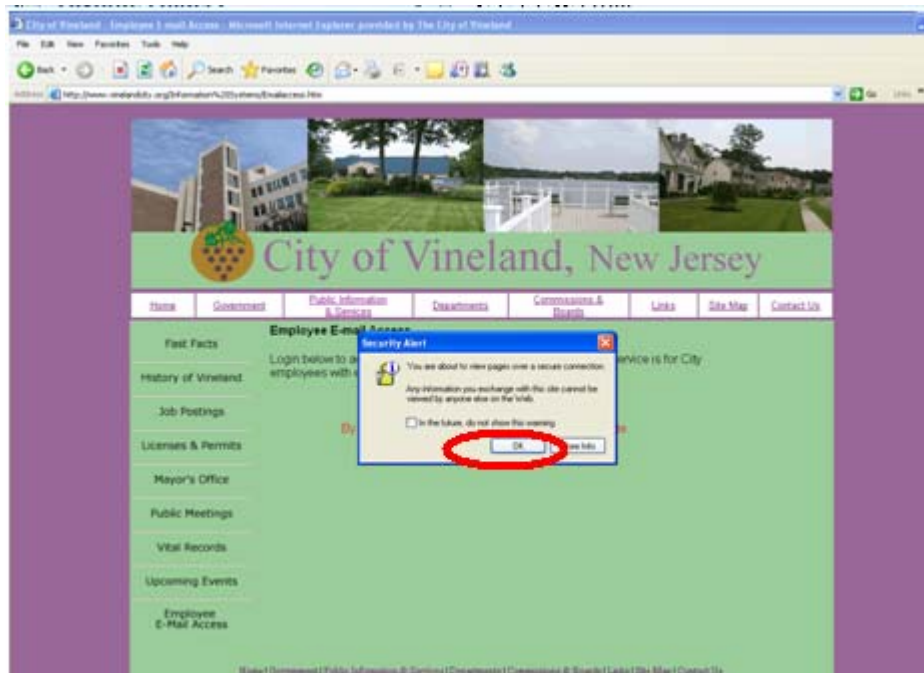
# Email LOGIN INSTRUCTIONS WHEN USING INTERNET EXPLORER VER. 6

If you are using Internet Explorer ver. 6 here are the steps to log onto your email

1. Click Login

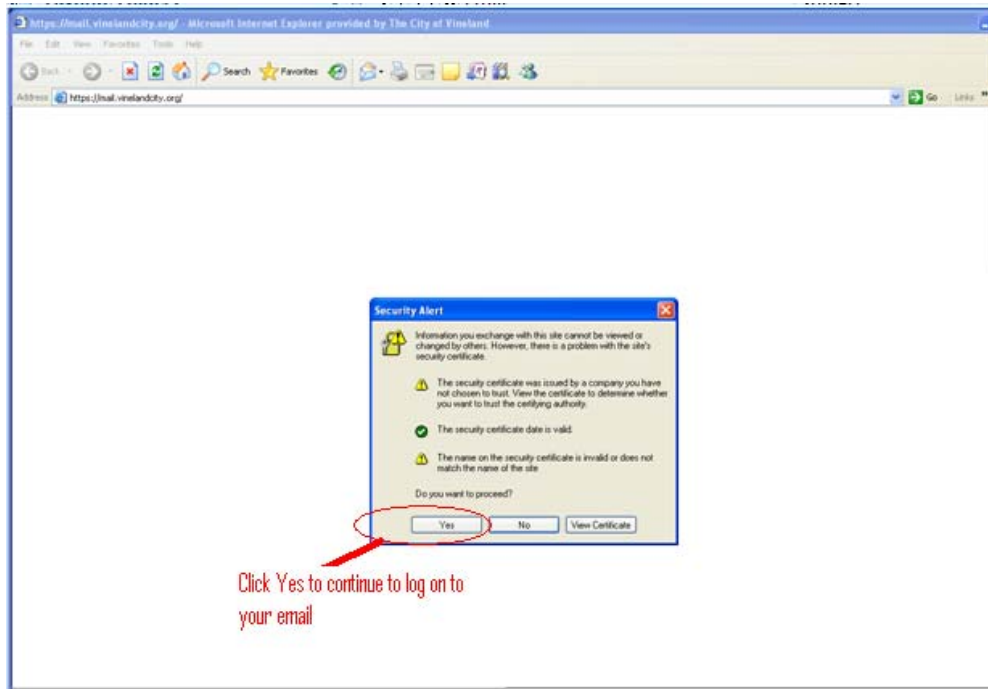


2. Click OK on the Security Alert Pop up ( This pop up is because you are going to a secure page)

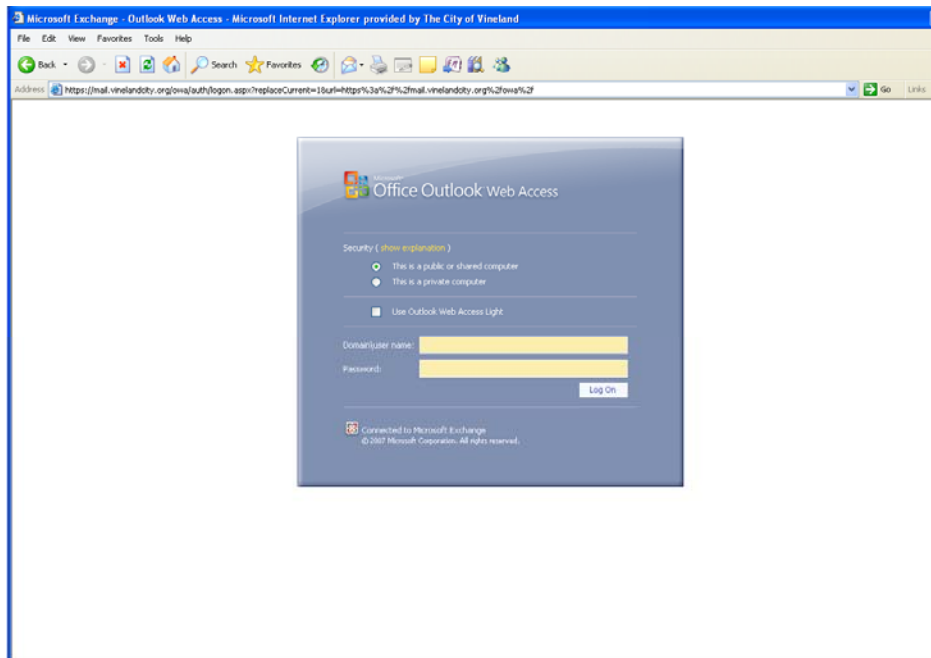


## Email LOGIN INSTRUCTIONS WHEN USING INTERNET EXPLORER VER. 6

- The Next Security Alert pops up because are certificate is self published  
Click the YES button to move to the login page

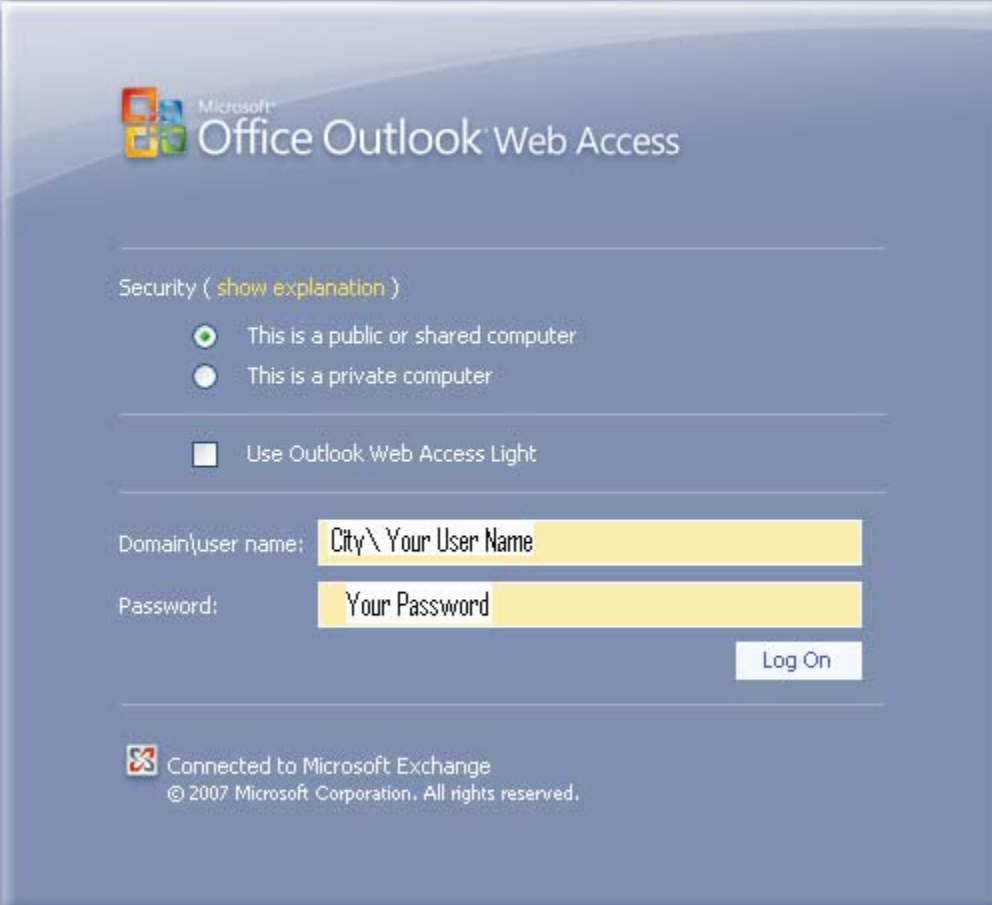


- This should be next page you see



## Email LOGIN INSTRUCTIONS WHEN USING INTERNET EXPLORER VER. 6

5. To Login to your email type in your user name Like we have show below replacing “Your User Name” with your user id
6. Then type in your password as shown below replacing “Your Password” with your correct password



The screenshot shows the Microsoft Office Outlook Web Access login interface. At the top left is the Microsoft logo and the text "Office Outlook Web Access". Below this is a "Security" section with a link to "show explanation". There are three radio button options: "This is a public or shared computer" (selected), "This is a private computer", and "Use Outlook Web Access Light" (unchecked). Below the security options are two text input fields: "Domain\user name:" containing "City\ Your User Name" and "Password:" containing "Your Password". A "Log On" button is positioned to the right of the password field. At the bottom left, there is a status icon and text: "Connected to Microsoft Exchange © 2007 Microsoft Corporation. All rights reserved."